

Travelling to Eltham

Bus

The town centre is served by the 124, 126, 132, 160, 161, 162, 233, 286, 314, 321, B15, B16, N21, 624, 658 and 660 bus routes.

Further details of all bus services in the area can be found on the travel pages of the Association for Commerce Eltham (ACE) web portal www.aceltham.co.uk.

TRAIN

Eltham Station is a 10 minute walk or short bus ride from the town centre and offers a regular train service to **London Charing Cross, Cannon Street, Victoria, and Kent**. The rail and bus station are combined making it easy to mix the two modes of travel. A cab office is located within the complex and a large car park is available for 165 cars. Facilities for drop off and pick up are well defined.

The town centre can also be easily accessed from the south by Mottingham station.

Visit www.nationalrail.co.uk for more information.



CAR

Eltham town centre has around 150 bays which allow 30 minutes free parking between 8.30am and 6.30pm. (For some areas in Well Hall Road it is only up to 4pm due to bus lanes.)

CAR PARKS

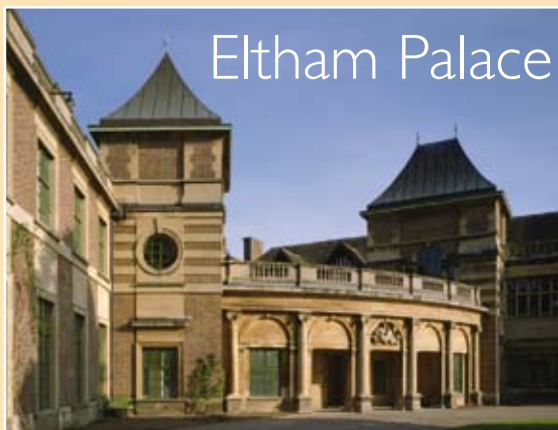
Sainsburys (Messeter/Passy Place)	464 spaces
The Orangery (Orangery Lane)	98 spaces
Marks & Spencer (Orangery Lane)	80 spaces
Eltham Centre (Archery Road)	69 spaces
Eltham Station (Well Hall Road)	165 spaces

VISITOR SERVICES

For further information on transport, accommodation and services in Eltham, please contact:

Greenwich Tourist Information Centre

Tel: **0870 608 2000** Web: www.greenwich.gov.uk/tourism



Eltham Palace

Combining Art Deco and ocean liner style, Eltham Palace is a stunning masterpiece of twentieth-century design. Textile magnates Stephen and Virginia Courtauld built their glamorous London showpiece in 1936, next to the remains of a medieval royal palace which was originally Henry VIII's boyhood home. The dining room features pink leather upholstered chairs and black-and-silver doors, portraying animals and birds from London Zoo. The Courtaulds' home movie is another delight, showing them relaxing with their pet lemur, Mah-Jongg. There is also a newly opened exhibition, *Eltham after the Courtaulds* detailing the time of the Royal Army Educational Corps (RAEC) at Eltham Palace. Outside you can discover many enticing features in the nineteen acres of surrounding gardens, including a sunken rose garden and medieval bridge.

Visit www.english-heritage.org.uk/elthampalace or call 020 8294 2548 for further details.



ENGLISH HERITAGE
Days out worth talking about.



Eltham Visitor Map

Greenwich
Council



Travelling to Eltham

BUS

The town centre is served by the 124, 126, 132, 160, 161, 162, 233, 286, 314, 321, B15, B16, N21, 624, 658 and 660 bus routes.

Further details of all bus services in the area can be found on the travel pages of the Association for Commerce Eltham (ACE) web portal www.acealtham.co.uk.

TRAIN

Eltham Station is a 10 minute walk or short bus ride from the town centre and offers a regular train service to **London Charing Cross, Cannon Street, Victoria, and Kent**. The rail and bus station are combined making it easy to mix the two modes of travel. A cab office is located within the complex and a large car park is available for 165 cars. Facilities for drop off and pick up are well defined.

The town centre can also be easily accessed from the south by Mottingham station.

Visit www.nationalrail.co.uk for more information.



CAR

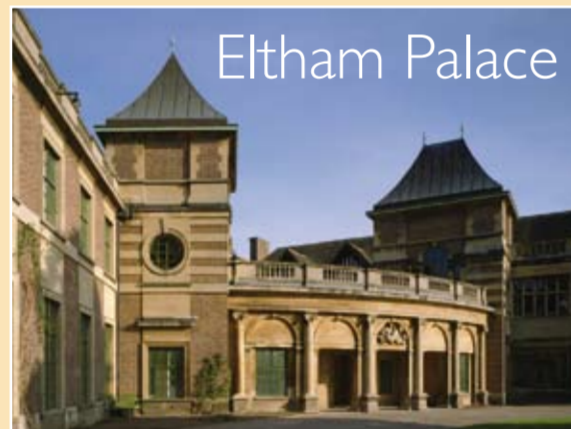
Eltham town centre has around 150 bays which allow 30 minutes free parking between 8.30am and 6.30pm. (For some areas in Well Hall Road it is only up to 4pm due to bus lanes.)

CAR PARKS

Sainsburys (Messeter/Passy Place)	464 spaces
The Orangery (Orangery Lane)	98 spaces
Marks & Spencer (Orangery Lane)	80 spaces
Eltham Centre (Archery Road)	69 spaces
Eltham Station (Well Hall Road)	165 spaces

VISITOR SERVICES

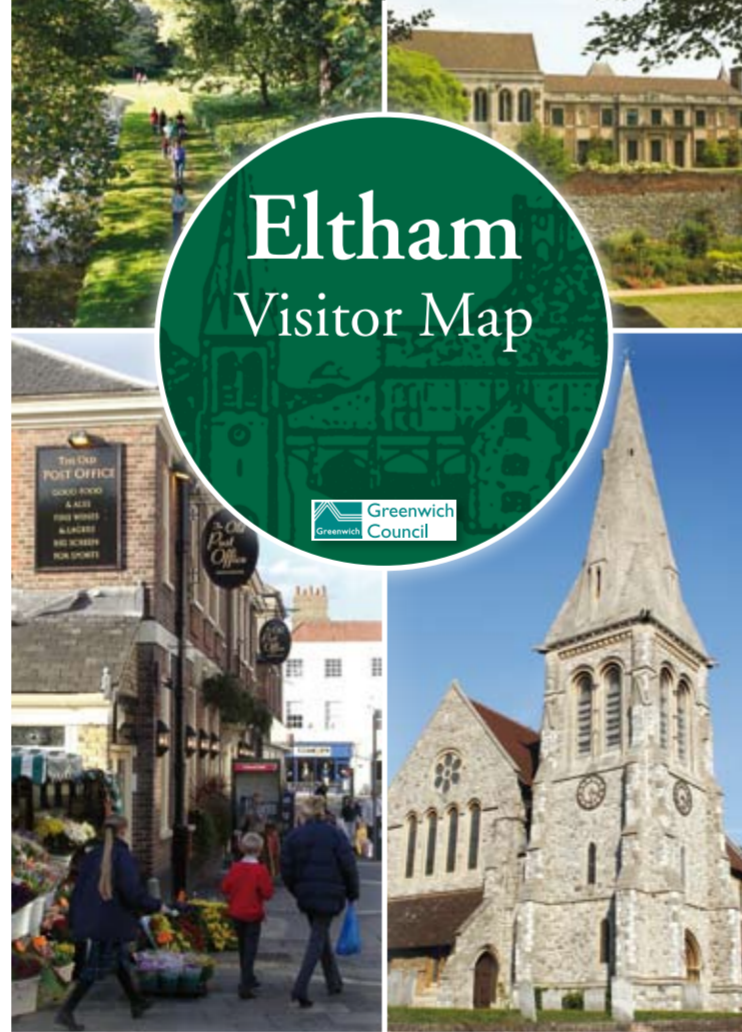
For further information on transport, accommodation and services in Eltham, please contact: **Greenwich Tourist Information Centre**
Tel: 0870 608 2000 Web: www.greenwich.gov.uk/tourism



Eltham Palace

Combining Art Deco and ocean liner style, Eltham Palace is a stunning masterpiece of twentieth-century design. Textile magnates Stephen and Virginia Courtauld built their glamorous London showpiece in 1936, next to the remains of a medieval royal palace which was originally Henry VIII's boyhood home. The dining room features pink leather upholstered chairs and black-and-silver doors, portraying animals and birds from London Zoo. The Courtaulds' home movie is another delight, showing them relaxing with their pet lemur, Mah-Jongg. There is also a newly opened exhibition, *Eltham after the Courtaulds* detailing the time of the Royal Army Educational Corps (RAEC) at Eltham Palace. Outside you can discover many enticing features in the nineteen acres of surrounding gardens, including a sunken rose garden and medieval bridge.

Visit www.english-heritage.org.uk/elthampalace or call 020 8294 2548 for further details.



Eltham Visitor Map

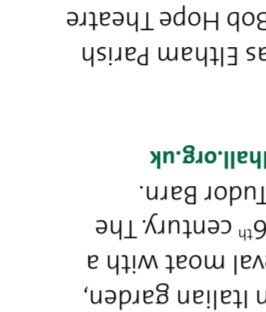
Greenwich Council

Places of Interest



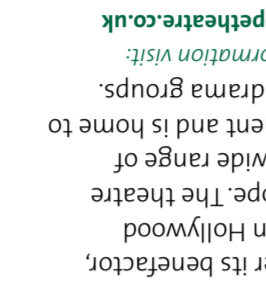
2 WELL HALL PLEASAUNCE

Well Hall Pleasaunce is an award-winning public park which benefited from the *Heritage Lottery Funding* of King Charles II. Since 1923 it has been the clubhouse of the Royal Blackheath Golf Club. The house can be visited by prior arrangement with the Secretary. Tel: 020 8850 1795



5 BOB HOPE THEATRE

The Bob Hope Theatre was built as Eltham Parish Hall in 1910. It was renamed The Bob Hope Theatre in 1982 after its benefactor, Eltham born Hollywood star Bob Hope. The theatre provides a wide range of many local drama groups. For more information visit: www.bobhope theatre.co.uk



9 ELTHAM PARK SOUTH

Eltham Park South in Glensack Road is a large park with a number of sports areas, including recently refurbished tennis courts. The town and its surrounding areas boast many architecturally interesting buildings, physical evidence of Eltham's history, as well as stunning views of the country-side. These can be seen on the heritage trail, town centre and Green Chain Walks shown on the map.



8 THE TARN

The Tarn in Court Road contains a beautiful landscaped garden and lake with interesting wild fowl. Many original features have been retained from the 1930s. There is also a picnic area and an 18th century ice well. The ice well served as a storage area for ice, used by the kitchen staff at Eltham Lodge.



1 ELTHAM PALACE

This unique house combines the finest Art Deco home in England with the remains of a medieval and Tudor royal palace – the boyhood home of Henry VIII. Built for millionaires, the palace reflects all the glamour and allure of the 1930s and allure of the boyhood home of Henry VIII. Built for millionaires, the palace reflects all the glamour and allure of the 1930s and allure of the boyhood home of Henry VIII. Built for millionaires, the palace reflects all the glamour and allure of the 1930s and allure of the boyhood home of Henry VIII.



7 AVERY HILL PARK & WINTER GARDEN

This large, open parkland with many splendid trees, is notable for its Winter Garden (a magnificent *hothouse*), containing tropical trees and plants from around the world. There is also a rose garden adjacent, affording a pleasant place to sit and relax, and a children's play area and cafe.



CAR

Eltham town centre has around 150 bays which allow 30 minutes free parking between 8.30am and 6.30pm. (For some areas in Well Hall Road it is only up to 4pm due to bus lanes.)

CAR PARKS

Sainsburys (Messeter/Passy Place)	464 spaces
The Orangery (Orangery Lane)	98 spaces
Marks & Spencer (Orangery Lane)	80 spaces
Eltham Centre (Archery Road)	69 spaces
Eltham Station (Well Hall Road)	165 spaces

VISITOR SERVICES

For further information on transport, accommodation and services in Eltham, please contact: **Greenwich Tourist Information Centre**
Tel: 0870 608 2000 Web: www.greenwich.gov.uk/tourism

BUS

The town centre is served by the 124, 126, 132, 160, 161, 162, 233, 286, 314, 321, B15, B16, N21, 624, 658 and 660 bus routes.

Further details of all bus services in the area can be found on the travel pages of the Association for Commerce Eltham (ACE) web portal www.acealtham.co.uk.

TRAIN

Eltham Station is a 10 minute walk or short bus ride from the town centre and offers a regular train service to **London Charing Cross, Cannon Street, Victoria, and Kent**. The rail and bus station are combined making it easy to mix the two modes of travel. A cab office is located within the complex and a large car park is available for 165 cars. Facilities for drop off and pick up are well defined.

The town centre can also be easily accessed from the south by Mottingham station.

Visit www.nationalrail.co.uk for more information.



CAR

Eltham town centre has around 150 bays which allow 30 minutes free parking between 8.30am and 6.30pm. (For some areas in Well Hall Road it is only up to 4pm due to bus lanes.)

CAR PARKS

Sainsburys (Messeter/Passy Place)	464 spaces
The Orangery (Orangery Lane)	98 spaces
Marks & Spencer (Orangery Lane)	80 spaces
Eltham Centre (Archery Road)	69 spaces
Eltham Station (Well Hall Road)	165 spaces

VISITOR SERVICES

For further information on transport, accommodation and services in Eltham, please contact: **Greenwich Tourist Information Centre**
Tel: 0870 608 2000 Web: www.greenwich.gov.uk/tourism

BUS

The town centre is served by the 124, 126, 132, 160, 161, 162, 233, 286, 314, 321, B15, B16, N21, 624, 658 and 660 bus routes.

Further details of all bus services in the area can be found on the travel pages of the Association for Commerce Eltham (ACE) web portal www.acealtham.co.uk.

TRAIN

Eltham Station is a 10 minute walk or short bus ride from the town centre and offers a regular train service to **London Charing Cross, Cannon Street, Victoria, and Kent**. The rail and bus station are combined making it easy to mix the two modes of travel. A cab office is located within the complex and a large car park is available for 165 cars. Facilities for drop off and pick up are well defined.

The town centre can also be easily accessed from the south by Mottingham station.

Visit www.nationalrail.co.uk for more information.



CAR

Eltham town centre has around 150 bays which allow 30 minutes free parking between 8.30am and 6.30pm. (For some areas in Well Hall Road it is only up to 4pm due to bus lanes.)

CAR PARKS

Sainsburys (Messeter/Passy Place)	464 spaces
The Orangery (Orangery Lane)	98 spaces
Marks & Spencer (Orangery Lane)	80 spaces
Eltham Centre (Archery Road)	69 spaces
Eltham Station (Well Hall Road)	165 spaces

VISITOR SERVICES

For further information on transport, accommodation and services in Eltham, please contact: **Greenwich Tourist Information Centre**
Tel: 0870 608 2000 Web: www.greenwich.gov.uk/tourism

BUS

The town centre is served by the 124, 126, 132, 160, 161, 162, 233, 286, 314, 321, B15, B16, N21, 624, 658 and 660 bus routes.

Further details of all bus services in the area can be found on the travel pages of the Association for Commerce Eltham (ACE) web portal www.acealtham.co.uk.

TRAIN

Eltham Station is a 10 minute walk or short bus ride from the town centre and offers a regular train service to **London Charing Cross, Cannon Street, Victoria, and Kent**. The rail and bus station are combined making it easy to mix the two modes of travel. A cab office is located within the complex and a large car park is available for 165 cars. Facilities for drop off and pick up are well defined.

The town centre can also be easily accessed from the south by Mottingham station.

Visit www.nationalrail.co.uk for more information.



CAR

Eltham town centre has around 150 bays which allow 30 minutes free parking between 8.30am and 6.30pm. (For some areas in Well Hall Road it is only up to 4pm due to bus lanes.)

CAR PARKS

Sainsburys (Messeter/Passy Place)	464 spaces
The Orangery (Orangery Lane)	98 spaces
Marks & Spencer (Orangery Lane)	80 spaces
Eltham Centre (Archery Road)	69 spaces
Eltham Station (Well Hall Road)	165 spaces

VISITOR SERVICES

For further information on transport, accommodation and services in Eltham, please contact: **Greenwich Tourist Information Centre**
Tel: 0870 608 2000 Web: www.greenwich.gov.uk/tourism

BUS

The town centre is served by the 124, 126, 132, 160, 161, 162, 233, 286, 314, 321, B15, B16, N21, 624, 658 and 660 bus routes.

Further details of all bus services in the area can be found on the travel pages of the Association for Commerce Eltham (ACE) web portal www.acealtham.co.uk.

TRAIN

Eltham Station is a 10 minute walk or short bus ride from the town centre and offers a regular train service to **London Charing Cross, Cannon Street, Victoria, and Kent**. The rail and bus station are combined making it easy to mix the two modes of travel. A cab office is located within the complex and a large car park is available for 165 cars. Facilities for drop off and pick up are well defined.

The town centre can also be easily accessed from the south by Mottingham station.

Visit www.nationalrail.co.uk for more information.



CAR

Eltham town centre has around 150 bays which allow 30 minutes free parking between 8.30am and 6.30pm. (For some areas in Well Hall Road it is only up to 4pm due to bus lanes.)

CAR PARKS

Sainsburys (Messeter/Passy Place)	464 spaces
The Orangery (Orangery Lane)	98 spaces
Marks & Spencer (Orangery Lane)	80 spaces
Eltham Centre (Archery Road)	69 spaces
Eltham Station (Well Hall Road)	165 spaces

VISITOR SERVICES

For further information on transport, accommodation and services in Eltham, please contact: **Greenwich Tourist Information Centre**
Tel: 0870 608 2000 Web: www.greenwich.gov.uk/tourism

BUS

The town centre is served by the 124, 126, 132, 160, 161, 162, 233, 286, 314, 321, B15, B16, N21, 624, 658 and 660 bus routes.

Further details of all bus services in the area can be found on the travel pages of the Association for Commerce Eltham (ACE) web portal www.acealtham.co.uk.

TRAIN

Eltham Station is a 10 minute walk or short bus ride from the town centre and offers a regular train service to **London Charing Cross, Cannon Street, Victoria, and Kent**. The rail and bus station are combined making it easy to mix the two modes of travel. A cab office is located within the complex and a large car park is available for 165 cars. Facilities for drop off and pick up are well defined.

The town centre can also be easily accessed from the south by Mottingham station.

Visit www.nationalrail.co.uk for more information.



CAR

Eltham town centre has around 150 bays which allow 30 minutes free parking between 8.30am and 6.30pm. (For some areas in Well Hall Road it is only up to 4pm due to bus lanes.)

CAR PARKS

Sainsburys (Messeter/Passy Place)	464 spaces
The Orangery (Orangery Lane)	98 spaces
Marks & Spencer (Orangery Lane)	80 spaces
Eltham Centre (Archery Road)	69 spaces
Eltham Station (Well Hall Road)	165 spaces

VISITOR SERVICES

For further information on transport, accommodation and services in Eltham, please contact: **Greenwich Tourist Information Centre**
Tel: 0870 608 2000 Web: www.greenwich.gov.uk/tourism

BUS

The town centre is served by the 124, 126, 132, 160, 161, 162, 233, 286, 314, 321, B15, B16, N21, 624, 658 and 660 bus routes.

Further details of all bus services in the area can be found on the travel pages of the Association for Commerce Eltham (ACE) web portal www.acealtham.co.uk.

TRAIN

Eltham Station is a 10 minute walk or short bus ride from the town centre and offers a regular train service to **London Charing Cross, Cannon Street, Victoria, and Kent**. The rail and bus station are combined making it easy to mix the two modes of travel. A cab office is located within the complex and a large car park is available for 165 cars. Facilities for drop off and pick up are well defined.

The town centre can also be easily accessed from the south by Mottingham station.

Visit www.nationalrail.co.uk for more information.



CAR

Eltham town centre has around 150 bays which allow 30 minutes free parking between 8.30am and 6.30pm. (For some areas in Well Hall Road it is only up to 4pm due to bus lanes.)

CAR PARKS

Sainsburys (Messeter/Passy Place)	464 spaces
The Orangery (Orangery Lane)	98 spaces
Marks & Spencer (Orangery Lane)	80 spaces
Eltham Centre (Archery Road)	69 spaces
Eltham Station (Well Hall Road)	165 spaces

VISITOR SERVICES

For further information on transport, accommodation and services in Eltham, please contact: **Greenwich Tourist Information Centre**
Tel: 0870 608 2000 Web: www.greenwich.gov.uk/tourism

BUS

The town centre is served by the 124, 126, 132, 160, 161, 162, 233, 286, 314, 321, B15, B16, N21, 624, 658 and 660 bus routes.

Further details of all bus services in the area can be found on the travel pages of the Association for Commerce Eltham (ACE) web portal www.acealtham.co.uk.

TRAIN

Eltham Station is a 10 minute walk or short bus ride from the town centre and offers a regular train service to **London Charing Cross, Cannon Street, Victoria, and Kent**. The rail and bus station are combined making it easy to mix the two modes of travel. A cab office is located within the complex and a large car park is available for 165 cars. Facilities for drop off and pick up are well defined.

The town centre can also be easily accessed from the south by Mottingham station.

Visit www.nationalrail.co.uk for more information.



CAR

Eltham town centre has around 150 bays which allow 30 minutes free parking between 8.30am and 6.30pm. (For some areas in Well Hall Road it is only up to 4pm due to bus lanes.)

CAR PARKS

Sainsburys (Messeter/Passy Place)	464 spaces
The Orangery (Orangery Lane)	98 spaces
Marks & Spencer (Orangery Lane)	80 spaces
Eltham Centre (Archery Road)	69 spaces
Eltham Station (Well Hall Road)	165 spaces

VISITOR SERVICES

For further information on transport, accommodation and services in Eltham, please contact: **Greenwich Tourist Information Centre**
Tel: 0870 608 2000 Web: www.greenwich.gov.uk/tourism

BUS

The town centre is served by the 124, 126, 132, 160, 161, 162, 233, 286, 314, 321, B15, B16, N21, 624, 658 and 660 bus routes.

Further details of all bus services in the area can be found on the travel pages of the Association for Commerce Eltham (ACE) web portal www.acealtham.co.uk.

TRAIN

Eltham Station is a 10 minute walk or short bus ride from the town centre and offers a regular train service to **London Charing Cross, Cannon Street, Victoria, and Kent**. The rail and bus station are combined making it easy to mix the two modes of travel. A cab office is located within the complex and a large car park is available for 165 cars. Facilities for drop off and pick up are well defined.

The town centre can also be easily accessed from the south by Mottingham station.

Visit www.nationalrail.co.uk for more information.



CAR

Eltham town centre has around 150 bays which allow 30 minutes free parking between 8.30am and 6.30pm. (For some areas in Well Hall Road it is only up to 4pm due to bus lanes.)

CAR PARKS

Sainsburys (Messeter/Passy Place)	464 spaces
The Orangery (Orangery Lane)	98 spaces
Marks & Spencer (Orangery Lane)	80 spaces
Eltham Centre (Archery Road)	69 spaces
Eltham Station (Well Hall Road)	165 spaces

VISITOR SERVICES

For further information on transport, accommodation and services in Eltham, please contact: **Greenwich Tourist Information Centre**
Tel: 0870 608 2000 Web:

Eltham's Renaissance

Eltham is experiencing an exciting period of change. With new investment and significant redevelopment taking place there's more reason to visit than ever before.

Situated in south east London, in the south of the borough of Greenwich, Eltham is a town which offers a bustling, traditional high-street with a mix of national chain stores and independent specialist shops to suit all shoppers' needs.

The town also boasts a range of visitor attractions, including Eltham Palace, a stunning masterpiece of 20th century design, and the award winning Well Hall Pleasance.

Greenwich Council's new Eltham Centre, one of the first of its kind in the UK, opened in November 2007 and offers a range of council, education and first-class leisure facilities, including a library, fitness centre and two swimming pools.

An historic town, mention of Eltham is first recorded in the Domesday Book of 1086. A Kentish village in medieval days, its location on the route from the coast to London appealed to England's sovereigns, and meant, for two centuries, Eltham Palace was the royal family's favourite country residence.

Today, Eltham still benefits from a central location, with good local road, rail and bus links. Rail links in particular offer a fast connection from central London. By road, Eltham is situated in close proximity to both the A205 (South Circular) A20 and the A2, providing easy access from south London and the south east.

This visitor map includes details of what to see, where to go and how to get to Eltham.



Local Information

ELTHAM BUSINESS

ELTHAM TOWN CENTRE PARTNERSHIP
The Partnership represents various stakeholders in the town centre, and aims to work in partnership for the benefit of Eltham town centre.
Visit: www.elthamtcp.co.uk or Tel: 020 8294 1812

ASSOCIATION FOR COMMERCE ELTHAM (ACE)
ACE represents the interests of all businesses in the town centre. Its website gives details of all shops, restaurants and businesses, as well as town centre news.
Visit: www.aceeltham.co.uk

COMMUNITY GROUPS

SOUTH GREENWICH FORUM
The Forum is an information exchange group working for the community in the south of the borough.
Visit: www.southgreenwichforum.co.uk or Tel: 020 8850 7578

ELTHAM SOCIETY
The Eltham Society keeps a watching brief on the physical environment of Eltham and considers ways in which it might be improved.
Visit: www.theelthamsociety.org.uk or Tel: 020 8850 0577

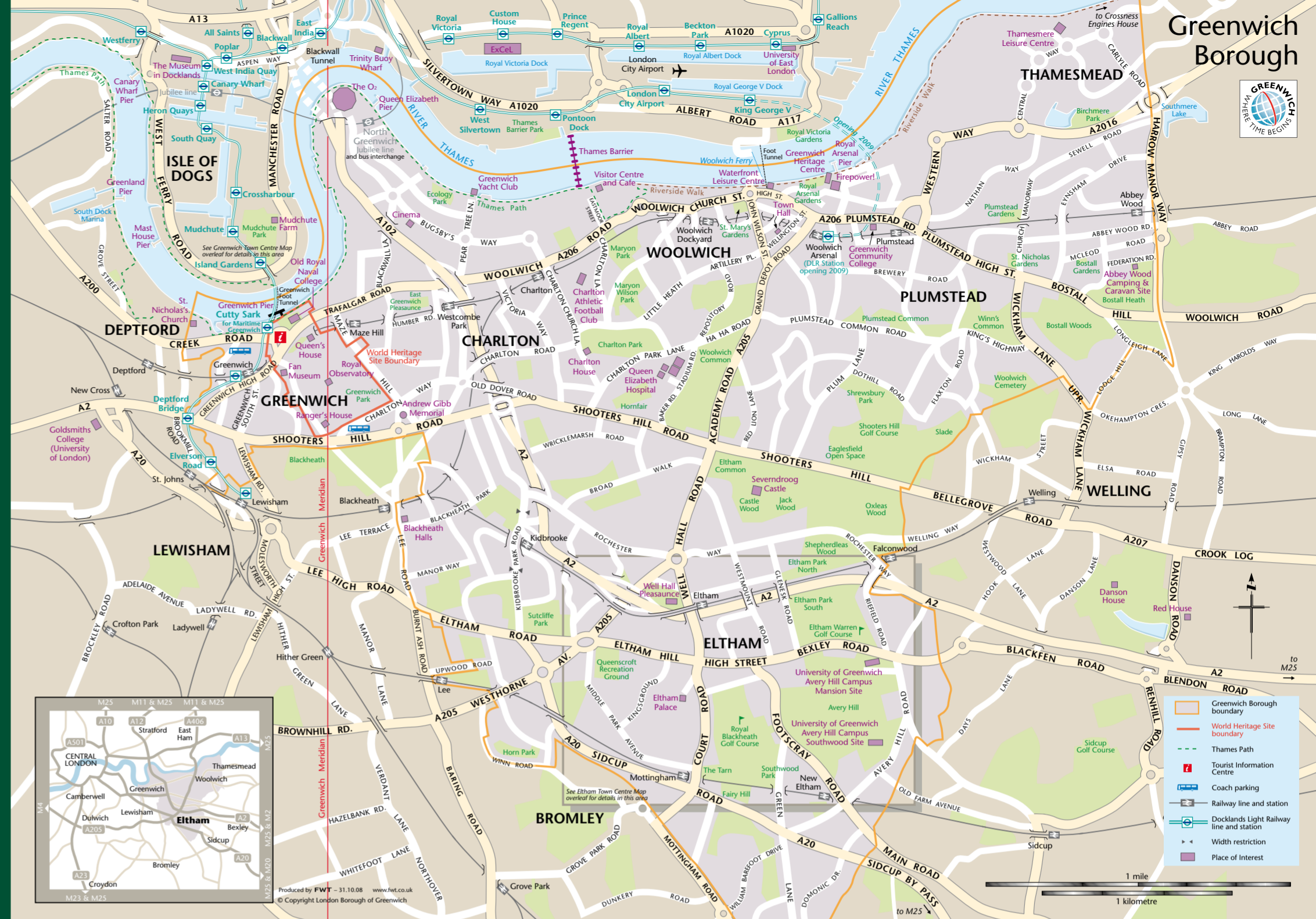
For general information about Eltham, including details of what's on, places to visit and local community groups, visit: www.thisiseltham.co.uk or www.senine.co.uk

USEFUL TELEPHONE NUMBERS

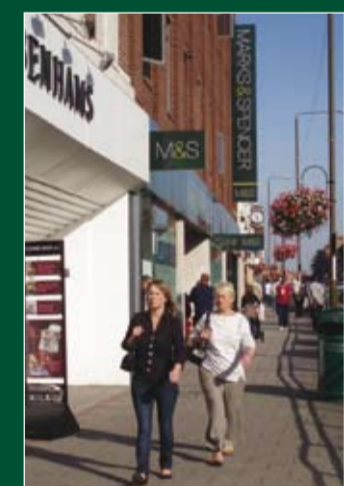
Eltham Police Station	020 8853 1212
Post Office	020 8850 4061
Job Centre	020 8258 4900
Greenwich Council	020 8854 8888
Eltham Town Centre Manager	020 8921 3479
Greenwich Tourist Information Centre	0870 608 2000
Parks and Open Spaces	020 8856 2232
Central Eltham Youth Project	020 8859 6644

Details of local Ward Councillors can be found at:
www.greenwich.gov.uk

Local Member of Parliament – Clive Efford
www.cliveefford.org.uk or Tel: 020 8850 5744



Eltham: A great place to shop, eat out or just pamper yourself



Eltham's traditional town centre offers a good mix of retail outlets, combining specialist independent shops with a broad range of over 30 national chain stores, including Debenhams and Next and a newly refurbished Marks & Spencer. The town centre is well laid out and simple to navigate.

For food and grocery shopping there is the high quality M&S Food Hall, large Sainsbury's store, Iceland, and a number of small independent grocery stores. A new Lidl store is due to open on the High Street by the end of 2008.



The wide boulevard-style pavements at the top of Well Hall Road are home to a treasure trove of specialist independent shops providing a range of goods including furniture, home decor, musical instruments, jewellery and fashion.



Details of all businesses operating in the town centre can be found at: www.aceeltham.co.uk

Further independent shops providing wholesale electrical goods, specialist furniture, home furnishings, photographic equipment and framing services (amongst others) can be found at the eastern approach to the High Street.

Eltham Arcade (opposite the High Street entrance to the Eltham Centre) was built in the early 20th century and incorporates a former ballroom, now home to a popular hardware store. The Arcade also houses a café and branch of Learn Direct, as well as a number of small independent traders. The latter offer a range of goods and services, including framing, hair and beauty, party accessories, children's shoes and wedding planning services.

Eltham has a great selection of hair salons, beauty, nail and tanning salons where people visit to be pampered and indulged. Fashion and shoe retailers are spread throughout the town, along with a couple of popular bridal wear shops.

The town also boasts a good selection of restaurants, cafés and public houses which offer a broad range of food and drink catering for all tastes.



A FARMERS' MARKET is held in Passey Place on the third Sunday of every month, between 10am and 3pm. The market sells a wide range of locally produced and organic food and drink from the south-east, including fresh fruit and vegetables, game, traditionally bred meats, sausages, free-range eggs, cheese, freshly baked bread, pies, pastries and freshly pressed juices. The market also sells a small range of plants and hosts occasional arts and craft stalls. For more details visit: www.cityandcountryfarmersmarkets.com or Tel: 020 8302 9010

Passey Place also hosts a programme of street entertainment throughout the year, as well as occasional visits from speciality markets.

For more details visit: www.cityandcountryfarmersmarkets.com or Tel: 020 8302 9010

Passey Place also hosts a programme of street entertainment throughout the year, as well as occasional visits from speciality markets.

BE A LOCAL TOURIST DAY

This annual event (usually held in October) encourages local people to explore Eltham and visit attractions on their doorstep, by offering free or reduced entrance fees and free guided tours and walks.



For details of all events in Eltham visit the local websites listed under Local Information.

Eltham Events

ELTHAM PALACE EVENTS

A range of events take place at Eltham Palace throughout the year including the legendary Art Deco Fairs that take place in May and September.
Visit: www.english-heritage.org.uk/elthampalace



MAY AND AUGUST FAYRES AT WELL HALL PLEASANCE

These events take place each year over the late May and August Bank Holidays and provide a range of fun and entertainment for the whole family.
Visit: www.wellhall.org.uk for more details.

ELTHAM LIGHTS UP

Eltham Lights Up (normally held on the third Thursday of November) marks the switching-on of the town's Christmas street lights and provides free festive fun and activities for the whole family. The event includes a fantastic street parade, musical entertainment, costumed characters, Talk-Cafe marquee and culminates in a stunning fireworks display.



Eltham Sports, Social and Leisure



St Mary's COMMUNITY CENTRE (the large white building in the middle of Eltham High Street) has been a meeting point for community groups for many years. The Centre and its satellite halls are available for booking by community groups and also for private functions, training courses, public meetings and some commercial events. St Mary's is an English Heritage Grade 2 listed building, dating from 1837. People wishing to visit can ring 020 8850 2040 to check availability. A history booklet and light refreshments are available by arrangement.
Visit: www.stmarys-eltham.co.uk

SPORTS AND SOCIAL CLUBS

There is a wide range of sports and social clubs operating in and around the Eltham area.
Visit: www.thisiseltham.co.uk or www.greenwich.gov.uk for details.



BELCANTO LONDON ACADEMY

Eltham boasts its own Arts Academy. The Belcanto London Academy is centrally situated in the heart of the town centre in Passey Place and offers full-time education for 7-16 year olds, with a specialist emphasis on the performing arts. The school also offers a range of part-time classes in the evenings, at weekends and during school holidays.
Visit: www.theatretraining.com
Tel: 020 8850 9888 for more information.

The ELTHAM CENTRE (Archery Road) is one of the first of its kind in the UK, and the first of three similar service centres to be built in the borough as part of Greenwich Council's ambitious £750 million modernisation programme.

The Centre comprises a range of council, education and leisure facilities, as well as a Citizens Advice Bureau and café with outdoor terrace.

The refurbished library offers visitors a wide range of books, DVDs and CDs and contains 40 computers offering free internet access.



The Centre provides first class leisure facilities including:

- ➔ 100 station fitness centre
- ➔ 8 lane, 25m competition pool with seated spectator viewing area
- ➔ family pool
- ➔ health suite with spa, sauna, steam room and jacuzzi
- ➔ exercise studio and crèche

Opening hours are:
Mon-Fri 7am to 10pm – Weekends 9am to 5pm
Timetables for each service vary.

Check www.greenwich.gov.uk for details.

